



MASENO UNIVERSITY
UNIVERSITY EXAMINATIONS 2013/2014

**THIRD YEAR FIRST SEMESTER EXAMINATIONS FOR THE DEGREE
OF BACHELOR OF ARTS WITH INFORMATION TECHNOLOGY
(MAIN CAMPUS)**

AMU 306: FORM AND ANALYSIS

Date: 31st March, 2014

Time: 8.30 – 1045am

INSTRUCTIONS:

- Answer QUESTION ONE and ANY OTHER TWO questions.

AMU 306: FORM AND ANALYSIS I

Instructions: Answer question **ONE** and any other **TWO**. Use pulse and bar numbers where applicable.

1. Study the music and answer the questions below

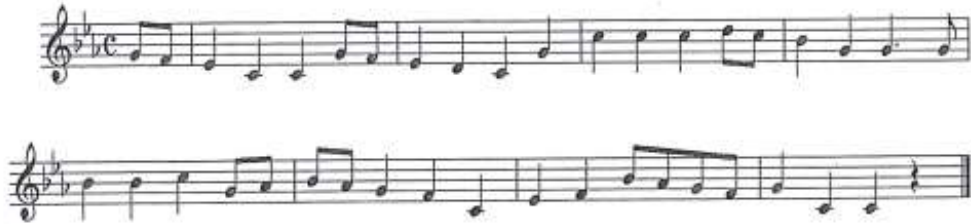
Flowers in the Valley

The musical score for 'Flowers in the Valley' is written in G major (one sharp) and 4/4 time. It consists of three staves of music. The first staff contains measures 1 through 6. The second staff, starting with a '7' above the first measure, contains measures 7 through 11. The third staff, starting with a '12' above the first measure, contains measures 12 through 16. The melody is composed of eighth and quarter notes, with some measures containing rests.

- a) Identify the phrases in this music (8 marks)
 - b) Identify any parallel phrasal construction (2 marks)
 - c) Identify any contrasting phrasal construction (2 marks)
 - d) Describe the rhythmic organization (8 marks)
 - e) Explain how climax is achieved in the music (5 marks)
 - f) Describe the musical structure (5 marks)
-
2. Using specific musical examples explain
 - a) How variation is achieved in the musical form Theme and Variation (12 marks)
 - b) Differentiate between sectional variation and continuous variation (8 marks)

3. Study the music below and analyze it in terms of

- a) Melodic intervals
- b) Melodic contour
- c) Pitch occurrence



4. Outline the characteristic features of Strophic and Through-composed musical forms (20 marks)

5. a) Describe Binary and Ternary forms (12 marks)

b) Differentiate between Rounded Binary form and Incipient Ternary form (8 marks)