



UNIVERSITY OF EMBU

2017/2018 ACADEMIC YEAR

SECOND SEMESTER EXAMINATIONS

SECOND YEAR EXAMINATIONS FOR THE DEGREE OF MASTER OF SCIENCE IN
PLANT ECOLOGY AND MASTER OF SCIENCE IN APPLIED MICROBIOLOGY

SBZ 545: BIOSTATISTICAL METHODS

DATE: APRIL 4, 2018

TIME: 2:00 – 5:00 PM

INSTRUCTIONS:

Answer ANY FOUR of the Following Questions.

All calculations to 3 decimal places. Show all steps of your calculations.

Learners to be provided with Statistical Tables

QUESTION ONE (25 MARKS)

- a) Below in Table 1 are increase in weight data in grams for lab mice fed on two diets X and Y .
Test whether the two diets differ on their effect on mean increase in weight ($\alpha = 0.05$).
(15 marks)
- a) Calculate the 99% confidence intervals of the diets in Table 1. (5 marks)
- b) Outline three applications of a t -distribution. (5 marks)

Table 1.

Diet X	25	32	30	32	24	14	32			
Diet Y	24	34	22	30	42	31	40	30	32	35

QUESTION TWO (25 MARKS)

- a) Compare correlation analysis to regression analysis. (5 marks)
- b) Using data on Table 2, (i) Determine the correlation between age (X) and brooding temperature (Y), (ii) the regression coefficient of the brooding temperature on the age of chicks: (20 marks)

Table 2.

Age of chicks (weeks)	1	2	3	4	5	6
Brooding temperature	35	29	29	26	24	21

QUESTION THREE (25 MARKS)

- a) Outline the assumptions of ANOVA (5 marks)
- b) Hay was stored using four different methods, and its energy value (kcal) measured (Table 3). Are there significant differences among different storage methods ($\alpha = 0.05$)? (20 marks)

Table 3.

Storage1	Storage2	Storage3	Storage4
14	18	18	22
13	16	19	18
14	18	18	18
11	17	19	18
12	13	17	20

QUESTION FOUR (25 MARKS)

- a) Discuss Mann-Whitney U test (5 marks)
- b) Table 4 shows weight gains in kilograms of two random samples of University of Embu students fed on two different diets but otherwise kept under identical conditions. Use U test at 0.01 level of significance to test the null hypothesis that the two population samples are identical against the alternative hypothesis that on the average the second diet produces a greater gain in weight. (20 marks)

Table 4.

Diet I	16	10	11	14	15	12	14	10
	12	15	24	15	15	18	13	14
Diet II	21	24	15	20	12	14	19	19
	15	20	15	19	21	21	16	16

QUESTION FIVE (25 MARKS)

- a) Use data in Table 5 to calculate; *i)* Arithmetic mean, *ii)* Geometric mean, *iii)* Harmonic mean, *iv)* sample variance, *v)* sample standard deviation, *vi)* Range, *vii)* sample standard error of mean, *viii)* coefficient of variation. (12 marks)

Table 5.

4.9	4.6	5.5	9.1	16.3	12.7	6.4	7.1
2.3	3.6	18.0	3.7	7.3	4.4	9.8	

- b) Use the data in Table 6 to test for an association between drug and patient condition ($\alpha = 0.05$). (13 marks)

Table 6.

	Cured	Condition worsens	No effect
Given the drug	200	40	60
Not given the drug	120	30	50

--END--

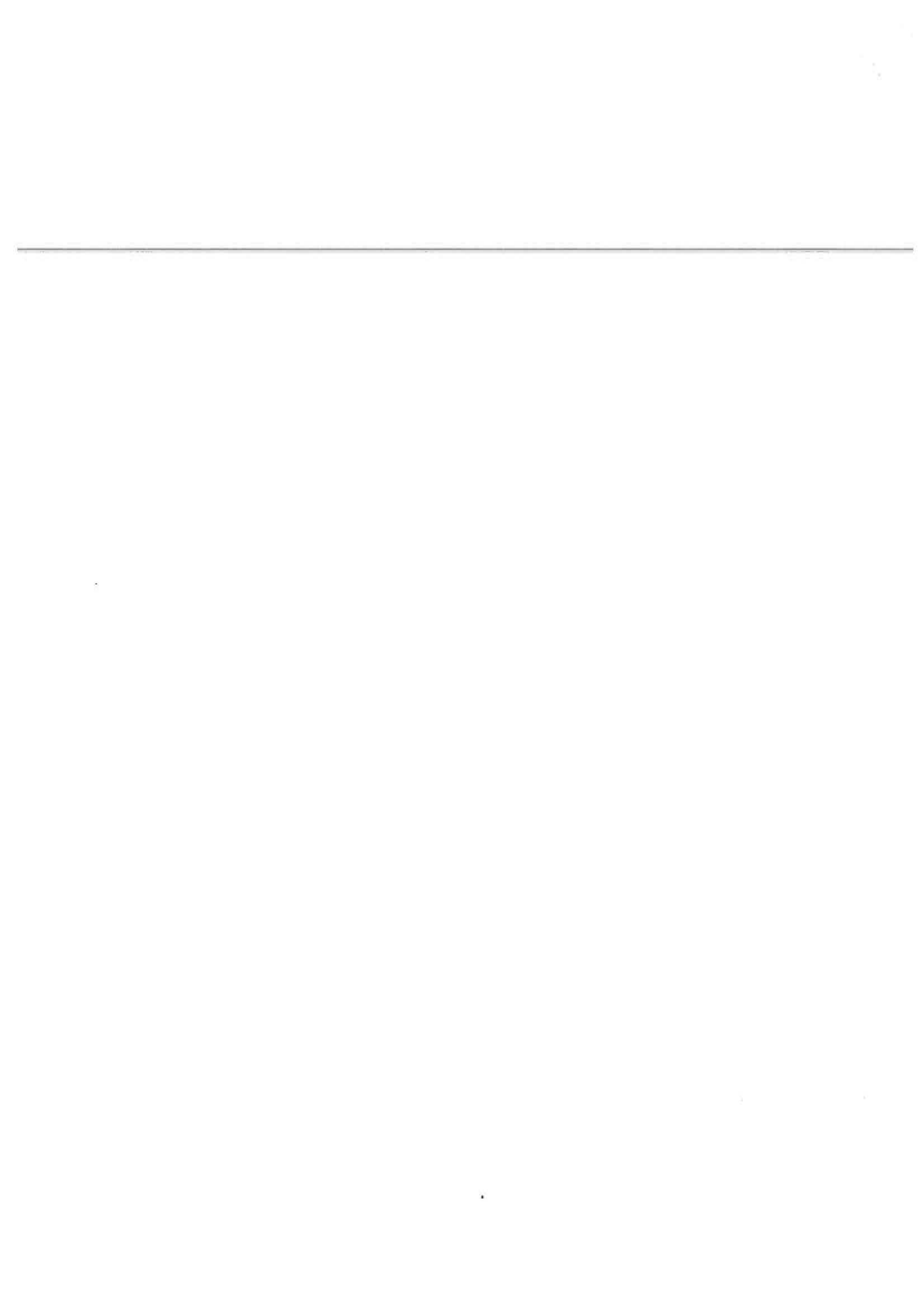
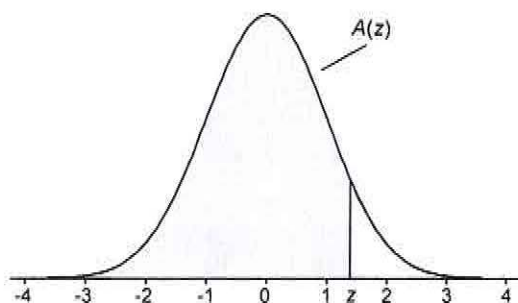


TABLE A.1

Cumulative Standardized Normal Distribution

$A(z)$ is the integral of the standardized normal distribution from $-\infty$ to z (in other words, the area under the curve to the left of z). It gives the probability of a normal random variable not being more than z standard deviations above its mean. Values of z of particular importance:



z	$A(z)$	
1.645	0.9500	Lower limit of right 5% tail
1.960	0.9750	Lower limit of right 2.5% tail
2.326	0.9900	Lower limit of right 1% tail
2.576	0.9950	Lower limit of right 0.5% tail
3.090	0.9990	Lower limit of right 0.1% tail
3.291	0.9995	Lower limit of right 0.05% tail

z	0.00	0.01	0.02	0.03	0.04	0.05	0.06	0.07	0.08	0.09
0.0	0.5000	0.5040	0.5080	0.5120	0.5160	0.5199	0.5239	0.5279	0.5319	0.5359
0.1	0.5398	0.5438	0.5478	0.5517	0.5557	0.5596	0.5636	0.5675	0.5714	0.5753
0.2	0.5793	0.5832	0.5871	0.5910	0.5948	0.5987	0.6026	0.6064	0.6103	0.6141
0.3	0.6179	0.6217	0.6255	0.6293	0.6331	0.6368	0.6406	0.6443	0.6480	0.6517
0.4	0.6554	0.6591	0.6628	0.6664	0.6700	0.6736	0.6772	0.6808	0.6844	0.6879
0.5	0.6915	0.6950	0.6985	0.7019	0.7054	0.7088	0.7123	0.7157	0.7190	0.7224
0.6	0.7257	0.7291	0.7324	0.7357	0.7389	0.7422	0.7454	0.7486	0.7517	0.7549
0.7	0.7580	0.7611	0.7642	0.7673	0.7704	0.7734	0.7764	0.7794	0.7823	0.7852
0.8	0.7881	0.7910	0.7939	0.7967	0.7995	0.8023	0.8051	0.8078	0.8106	0.8133
0.9	0.8159	0.8186	0.8212	0.8238	0.8264	0.8289	0.8315	0.8340	0.8365	0.8389
1.0	0.8413	0.8438	0.8461	0.8485	0.8508	0.8531	0.8554	0.8577	0.8599	0.8621
1.1	0.8643	0.8665	0.8686	0.8708	0.8729	0.8749	0.8770	0.8790	0.8810	0.8830
1.2	0.8849	0.8869	0.8888	0.8907	0.8925	0.8944	0.8962	0.8980	0.8997	0.9015
1.3	0.9032	0.9049	0.9066	0.9082	0.9099	0.9115	0.9131	0.9147	0.9162	0.9177
1.4	0.9192	0.9207	0.9222	0.9236	0.9251	0.9265	0.9279	0.9292	0.9306	0.9319
1.5	0.9332	0.9345	0.9357	0.9370	0.9382	0.9394	0.9406	0.9418	0.9429	0.9441
1.6	0.9452	0.9463	0.9474	0.9484	0.9495	0.9505	0.9515	0.9525	0.9535	0.9545
1.7	0.9554	0.9564	0.9573	0.9582	0.9591	0.9599	0.9608	0.9616	0.9625	0.9633
1.8	0.9641	0.9649	0.9656	0.9664	0.9671	0.9678	0.9686	0.9693	0.9699	0.9706
1.9	0.9713	0.9719	0.9726	0.9732	0.9738	0.9744	0.9750	0.9756	0.9761	0.9767
2.0	0.9772	0.9778	0.9783	0.9788	0.9793	0.9798	0.9803	0.9808	0.9812	0.9817
2.1	0.9821	0.9826	0.9830	0.9834	0.9838	0.9842	0.9846	0.9850	0.9854	0.9857
2.2	0.9861	0.9864	0.9868	0.9871	0.9875	0.9878	0.9881	0.9884	0.9887	0.9890
2.3	0.9893	0.9896	0.9898	0.9901	0.9904	0.9906	0.9909	0.9911	0.9913	0.9916
2.4	0.9918	0.9920	0.9922	0.9925	0.9927	0.9929	0.9931	0.9932	0.9934	0.9936
2.5	0.9938	0.9940	0.9941	0.9943	0.9945	0.9946	0.9948	0.9949	0.9951	0.9952
2.6	0.9953	0.9955	0.9956	0.9957	0.9959	0.9960	0.9961	0.9962	0.9963	0.9964
2.7	0.9965	0.9966	0.9967	0.9968	0.9969	0.9970	0.9971	0.9972	0.9973	0.9974
2.8	0.9974	0.9975	0.9976	0.9977	0.9977	0.9978	0.9979	0.9979	0.9980	0.9981
2.9	0.9981	0.9982	0.9982	0.9983	0.9984	0.9984	0.9985	0.9985	0.9986	0.9986
3.0	0.9987	0.9987	0.9987	0.9988	0.9988	0.9989	0.9989	0.9989	0.9990	0.9990
3.1	0.9990	0.9991	0.9991	0.9991	0.9992	0.9992	0.9992	0.9992	0.9993	0.9993
3.2	0.9993	0.9993	0.9994	0.9994	0.9994	0.9994	0.9994	0.9995	0.9995	0.9995
3.3	0.9995	0.9995	0.9995	0.9996	0.9996	0.9996	0.9996	0.9996	0.9996	0.9997
3.4	0.9997	0.9997	0.9997	0.9997	0.9997	0.9997	0.9997	0.9997	0.9997	0.9998
3.5	0.9998	0.9998	0.9998	0.9998	0.9998	0.9998	0.9998	0.9998	0.9998	0.9998
3.6	0.9998	0.9998	0.9999							

TABLE A.2
t Distribution: Critical Values of t

<i>Degrees of freedom</i>	<i>Two-tailed test: One-tailed test:</i>	<i>Significance level</i>					
		10% 5%	5% 2.5%	2% 1%	1% 0.5%	0.2% 0.1%	0.1% 0.05%
1		6.314	12.706	31.821	63.657	318.309	636.619
2		2.920	4.303	6.965	9.925	22.327	31.599
3		2.353	3.182	4.541	5.841	10.215	12.924
4		2.132	2.776	3.747	4.604	7.173	8.610
5		2.015	2.571	3.365	4.032	5.893	6.869
6		1.943	2.447	3.143	3.707	5.208	5.959
7		1.894	2.365	2.998	3.499	4.785	5.408
8		1.860	2.306	2.896	3.355	4.501	5.041
9		1.833	2.262	2.821	3.250	4.297	4.781
10		1.812	2.228	2.764	3.169	4.144	4.587
11		1.796	2.201	2.718	3.106	4.025	4.437
12		1.782	2.179	2.681	3.055	3.930	4.318
13		1.771	2.160	2.650	3.012	3.852	4.221
14		1.761	2.145	2.624	2.977	3.787	4.140
15		1.753	2.131	2.602	2.947	3.733	4.073
16		1.746	2.120	2.583	2.921	3.686	4.015
17		1.740	2.110	2.567	2.898	3.646	3.965
18		1.734	2.101	2.552	2.878	3.610	3.922
19		1.729	2.093	2.539	2.861	3.579	3.883
20		1.725	2.086	2.528	2.845	3.552	3.850
21		1.721	2.080	2.518	2.831	3.527	3.819
22		1.717	2.074	2.508	2.819	3.505	3.792
23		1.714	2.069	2.500	2.807	3.485	3.768
24		1.711	2.064	2.492	2.797	3.467	3.745
25		1.708	2.060	2.485	2.787	3.450	3.725
26		1.706	2.056	2.479	2.779	3.435	3.707
27		1.703	2.052	2.473	2.771	3.421	3.690
28		1.701	2.048	2.467	2.763	3.408	3.674
29		1.699	2.045	2.462	2.756	3.396	3.659
30		1.697	2.042	2.457	2.750	3.385	3.646
32		1.694	2.037	2.449	2.738	3.365	3.622
34		1.691	2.032	2.441	2.728	3.348	3.601
36		1.688	2.028	2.434	2.719	3.333	3.582
38		1.686	2.024	2.429	2.712	3.319	3.566
40		1.684	2.021	2.423	2.704	3.307	3.551
42		1.682	2.018	2.418	2.698	3.296	3.538
44		1.680	2.015	2.414	2.692	3.286	3.526
46		1.679	2.013	2.410	2.687	3.277	3.515
48		1.677	2.011	2.407	2.682	3.269	3.505
50		1.676	2.009	2.403	2.678	3.261	3.496
60		1.671	2.000	2.390	2.660	3.232	3.460
70		1.667	1.994	2.381	2.648	3.211	3.435
80		1.664	1.990	2.374	2.639	3.195	3.416
90		1.662	1.987	2.368	2.632	3.183	3.402
100		1.660	1.984	2.364	2.626	3.174	3.390
120		1.658	1.980	2.358	2.617	3.160	3.373
150		1.655	1.976	2.351	2.609	3.145	3.357
200		1.653	1.972	2.345	2.601	3.131	3.340
300		1.650	1.968	2.339	2.592	3.118	3.323
400		1.649	1.966	2.336	2.588	3.111	3.315
500		1.648	1.965	2.334	2.586	3.107	3.310
600		1.647	1.964	2.333	2.584	3.104	3.307
∞		1.645	1.960	2.326	2.576	3.090	3.291

TABLE A.3

F Distribution: Critical Values of F (5% significance level)

v_1	1	2	3	4	5	6	7	8	9	10	12	14	16	18	20
1	161.45	199.50	215.71	224.58	230.16	233.99	236.77	238.88	240.54	241.88	243.91	245.36	246.46	247.32	248.01
2	18.51	19.00	19.16	19.25	19.30	19.33	19.35	19.37	19.38	19.40	19.41	19.42	19.43	19.44	19.45
3	10.13	9.55	9.28	9.12	9.01	8.94	8.89	8.85	8.81	8.79	8.74	8.71	8.69	8.67	8.66
4	7.71	6.94	6.59	6.39	6.26	6.16	6.09	6.04	6.00	5.96	5.91	5.87	5.84	5.82	5.80
5	6.61	5.79	5.41	5.19	5.05	4.95	4.88	4.82	4.77	4.74	4.68	4.64	4.60	4.58	4.56
6	5.99	5.14	4.76	4.53	4.39	4.28	4.21	4.15	4.10	4.06	4.00	3.96	3.92	3.90	3.87
7	5.59	4.74	4.35	4.12	3.97	3.87	3.79	3.73	3.68	3.64	3.57	3.53	3.49	3.47	3.44
8	5.32	4.46	4.07	3.84	3.69	3.58	3.50	3.44	3.39	3.35	3.28	3.24	3.20	3.17	3.15
9	5.12	4.26	3.86	3.63	3.48	3.37	3.29	3.23	3.18	3.14	3.07	3.03	2.99	2.96	2.94
10	4.96	4.10	3.71	3.48	3.33	3.22	3.14	3.07	3.02	2.98	2.91	2.86	2.83	2.80	2.77
11	4.84	3.98	3.59	3.36	3.20	3.09	3.01	2.95	2.90	2.85	2.79	2.74	2.70	2.67	2.65
12	4.75	3.89	3.49	3.26	3.11	3.00	2.91	2.85	2.80	2.75	2.69	2.64	2.60	2.57	2.54
13	4.67	3.81	3.41	3.18	3.03	2.92	2.83	2.77	2.71	2.67	2.60	2.55	2.51	2.48	2.46
14	4.60	3.74	3.34	3.11	2.96	2.85	2.76	2.70	2.65	2.60	2.53	2.48	2.44	2.41	2.39
15	4.54	3.68	3.29	3.06	2.90	2.79	2.71	2.64	2.59	2.54	2.48	2.42	2.38	2.35	2.33
16	4.49	3.63	3.24	3.01	2.85	2.74	2.66	2.59	2.54	2.49	2.42	2.37	2.33	2.30	2.28
17	4.45	3.59	3.20	2.96	2.81	2.70	2.61	2.55	2.49	2.45	2.38	2.33	2.29	2.26	2.23
18	4.41	3.55	3.16	2.93	2.77	2.66	2.58	2.51	2.46	2.41	2.34	2.29	2.25	2.22	2.19
19	4.38	3.52	3.13	2.90	2.74	2.63	2.54	2.48	2.42	2.38	2.31	2.26	2.21	2.18	2.16
20	4.35	3.49	3.10	2.87	2.71	2.60	2.51	2.45	2.39	2.35	2.28	2.22	2.18	2.15	2.12
21	4.32	3.47	3.07	2.84	2.68	2.57	2.49	2.42	2.37	2.32	2.25	2.20	2.16	2.12	2.10
22	4.30	3.44	3.05	2.82	2.66	2.55	2.46	2.40	2.34	2.30	2.23	2.17	2.13	2.10	2.07
23	4.28	3.42	3.03	2.80	2.64	2.53	2.44	2.37	2.32	2.27	2.20	2.15	2.11	2.08	2.05
24	4.26	3.40	3.01	2.78	2.62	2.51	2.42	2.36	2.30	2.25	2.18	2.13	2.09	2.05	2.03
25	4.24	3.39	2.99	2.76	2.60	2.49	2.40	2.34	2.28	2.24	2.16	2.11	2.07	2.04	2.01
26	4.22	3.37	2.98	2.74	2.59	2.47	2.39	2.32	2.27	2.22	2.15	2.09	2.05	2.02	1.99
27	4.21	3.35	2.96	2.73	2.57	2.46	2.37	2.31	2.25	2.20	2.13	2.08	2.04	2.00	1.97
28	4.20	3.34	2.95	2.71	2.56	2.45	2.36	2.29	2.24	2.19	2.12	2.06	2.02	1.99	1.96
29	4.18	3.33	2.93	2.70	2.55	2.43	2.35	2.28	2.22	2.18	2.10	2.05	2.01	1.97	1.94
30	4.17	3.32	2.92	2.69	2.53	2.42	2.33	2.27	2.21	2.16	2.09	2.04	1.99	1.96	1.93
35	4.12	3.27	2.87	2.64	2.49	2.37	2.29	2.22	2.16	2.11	2.04	1.99	1.94	1.91	1.88
40	4.08	3.23	2.84	2.61	2.45	2.34	2.25	2.18	2.12	2.08	2.00	1.95	1.90	1.87	1.84
50	4.03	3.18	2.79	2.56	2.40	2.29	2.20	2.13	2.07	2.03	1.95	1.89	1.85	1.81	1.78
60	4.00	3.15	2.76	2.53	2.37	2.25	2.17	2.10	2.04	1.99	1.92	1.86	1.82	1.78	1.75
70	3.98	3.13	2.74	2.50	2.35	2.23	2.14	2.07	2.02	1.97	1.89	1.84	1.79	1.75	1.72
80	3.96	3.11	2.72	2.49	2.33	2.21	2.13	2.06	2.00	1.95	1.88	1.82	1.77	1.73	1.70
90	3.95	3.10	2.71	2.47	2.32	2.20	2.11	2.04	1.99	1.94	1.86	1.80	1.76	1.72	1.69
100	3.94	3.09	2.70	2.46	2.31	2.19	2.10	2.03	1.97	1.93	1.85	1.79	1.75	1.71	1.68
120	3.92	3.07	2.68	2.45	2.29	2.18	2.09	2.02	1.96	1.91	1.83	1.78	1.73	1.69	1.66
150	3.90	3.06	2.66	2.43	2.27	2.16	2.07	2.00	1.94	1.89	1.82	1.76	1.71	1.67	1.64
200	3.89	3.04	2.65	2.42	2.26	2.14	2.06	1.98	1.93	1.88	1.80	1.74	1.69	1.66	1.62
250	3.88	3.03	2.64	2.41	2.25	2.13	2.05	1.98	1.92	1.87	1.79	1.73	1.68	1.65	1.61
300	3.87	3.03	2.63	2.40	2.24	2.13	2.04	1.97	1.91	1.86	1.78	1.72	1.68	1.64	1.61
400	3.86	3.02	2.63	2.39	2.24	2.12	2.03	1.96	1.90	1.85	1.78	1.72	1.67	1.63	1.60
500	3.86	3.01	2.62	2.39	2.23	2.12	2.03	1.96	1.90	1.85	1.77	1.71	1.66	1.62	1.59
600	3.86	3.01	2.62	2.39	2.23	2.11	2.02	1.95	1.90	1.85	1.77	1.71	1.66	1.62	1.59
750	3.85	3.01	2.62	2.38	2.23	2.11	2.02	1.95	1.89	1.84	1.77	1.70	1.66	1.62	1.58
1000	3.85	3.00	2.61	2.38	2.22	2.11	2.02	1.95	1.89	1.84	1.76	1.70	1.65	1.61	1.58

TABLE A.3 (continued)

F Distribution: Critical Values of F (5% significance level)

ν_1	25	30	35	40	50	60	75	100	150	200
1	249.26	250.10	250.69	251.14	251.77	252.20	252.62	253.04	253.46	253.68
2	19.46	19.46	19.47	19.47	19.48	19.48	19.48	19.49	19.49	19.49
3	8.63	8.62	8.60	8.59	8.58	8.57	8.56	8.55	8.54	8.54
4	5.77	5.75	5.73	5.72	5.70	5.69	5.68	5.66	5.65	5.65
5	4.52	4.50	4.48	4.46	4.44	4.43	4.42	4.41	4.39	4.39
6	3.83	3.81	3.79	3.77	3.75	3.74	3.73	3.71	3.70	3.69
7	3.40	3.38	3.36	3.34	3.32	3.30	3.29	3.27	3.26	3.25
8	3.11	3.08	3.06	3.04	3.02	3.01	2.99	2.97	2.96	2.95
9	2.89	2.86	2.84	2.83	2.80	2.79	2.77	2.76	2.74	2.73
10	2.73	2.70	2.68	2.66	2.64	2.62	2.60	2.59	2.57	2.56
11	2.60	2.57	2.55	2.53	2.51	2.49	2.47	2.46	2.44	2.43
12	2.50	2.47	2.44	2.43	2.40	2.38	2.37	2.35	2.33	2.32
13	2.41	2.38	2.36	2.34	2.31	2.30	2.28	2.26	2.24	2.23
14	2.34	2.31	2.28	2.27	2.24	2.22	2.21	2.19	2.17	2.16
15	2.28	2.25	2.22	2.20	2.18	2.16	2.14	2.12	2.10	2.10
16	2.23	2.19	2.17	2.15	2.12	2.11	2.09	2.07	2.05	2.04
17	2.18	2.15	2.12	2.10	2.08	2.06	2.04	2.02	2.00	1.99
18	2.14	2.11	2.08	2.06	2.04	2.02	2.00	1.98	1.96	1.95
19	2.11	2.07	2.05	2.03	2.00	1.98	1.96	1.94	1.92	1.91
20	2.07	2.04	2.01	1.99	1.97	1.95	1.93	1.91	1.89	1.88
21	2.05	2.01	1.98	1.96	1.94	1.92	1.90	1.88	1.86	1.84
22	2.02	1.98	1.96	1.94	1.91	1.89	1.87	1.85	1.83	1.82
23	2.00	1.96	1.93	1.91	1.88	1.86	1.84	1.82	1.80	1.79
24	1.97	1.94	1.91	1.89	1.86	1.84	1.82	1.80	1.78	1.77
25	1.96	1.92	1.89	1.87	1.84	1.82	1.80	1.78	1.76	1.75
26	1.94	1.90	1.87	1.85	1.82	1.80	1.78	1.76	1.74	1.73
27	1.92	1.88	1.86	1.84	1.81	1.79	1.76	1.74	1.72	1.71
28	1.91	1.87	1.84	1.82	1.79	1.77	1.75	1.73	1.70	1.69
29	1.89	1.85	1.83	1.81	1.77	1.75	1.73	1.71	1.69	1.67
30	1.88	1.84	1.81	1.79	1.76	1.74	1.72	1.70	1.67	1.66
35	1.82	1.79	1.76	1.74	1.70	1.68	1.66	1.63	1.61	1.60
40	1.78	1.74	1.72	1.69	1.66	1.64	1.61	1.59	1.56	1.55
50	1.73	1.69	1.66	1.63	1.60	1.58	1.55	1.52	1.50	1.48
60	1.69	1.65	1.62	1.59	1.56	1.53	1.51	1.48	1.45	1.44
70	1.66	1.62	1.59	1.57	1.53	1.50	1.48	1.45	1.42	1.40
80	1.64	1.60	1.57	1.54	1.51	1.48	1.45	1.43	1.39	1.38
90	1.63	1.59	1.55	1.53	1.49	1.46	1.44	1.41	1.38	1.36
100	1.62	1.57	1.54	1.52	1.48	1.45	1.42	1.39	1.36	1.34
120	1.60	1.55	1.52	1.50	1.46	1.43	1.40	1.37	1.33	1.32
150	1.58	1.54	1.50	1.48	1.44	1.41	1.38	1.34	1.31	1.29
200	1.56	1.52	1.48	1.46	1.41	1.39	1.35	1.32	1.28	1.26
250	1.55	1.50	1.47	1.44	1.40	1.37	1.34	1.31	1.27	1.25
300	1.54	1.50	1.46	1.43	1.39	1.36	1.33	1.30	1.26	1.23
400	1.53	1.49	1.45	1.42	1.38	1.35	1.32	1.28	1.24	1.22
500	1.53	1.48	1.45	1.42	1.38	1.35	1.31	1.28	1.23	1.21
600	1.52	1.48	1.44	1.41	1.37	1.34	1.31	1.27	1.23	1.20
750	1.52	1.47	1.44	1.41	1.37	1.34	1.30	1.26	1.22	1.20
1000	1.52	1.47	1.43	1.41	1.36	1.33	1.30	1.26	1.22	1.19

TABLE A.3 (continued)

F Distribution: Critical Values of F (1% significance level)

v_1	25	30	35	40	50	60	75	100	150	200
v_2										
1	6239.83	6260.65	6275.57	6286.78	6302.52	6313.03	6323.56	6334.11	6344.68	6349.97
2	99.46	99.47	99.47	99.47	99.48	99.48	99.49	99.49	99.49	99.49
3	26.58	26.50	26.45	26.41	26.35	26.32	26.28	26.24	26.20	26.18
4	13.91	13.84	13.79	13.75	13.69	13.65	13.61	13.58	13.54	13.52
5	9.45	9.38	9.33	9.29	9.24	9.20	9.17	9.13	9.09	9.08
6	7.30	7.23	7.18	7.14	7.09	7.06	7.02	6.99	6.95	6.93
7	6.06	5.99	5.94	5.91	5.86	5.82	5.79	5.75	5.72	5.70
8	5.26	5.20	5.15	5.12	5.07	5.03	5.00	4.96	4.93	4.91
9	4.71	4.65	4.60	4.57	4.52	4.48	4.45	4.41	4.38	4.36
10	4.31	4.25	4.20	4.17	4.12	4.08	4.05	4.01	3.98	3.96
11	4.01	3.94	3.89	3.86	3.81	3.78	3.74	3.71	3.67	3.66
12	3.76	3.70	3.65	3.62	3.57	3.54	3.50	3.47	3.43	3.41
13	3.57	3.51	3.46	3.43	3.38	3.34	3.31	3.27	3.24	3.22
14	3.41	3.35	3.30	3.27	3.22	3.18	3.15	3.11	3.08	3.06
15	3.28	3.21	3.17	3.13	3.08	3.05	3.01	2.98	2.94	2.92
16	3.16	3.10	3.05	3.02	2.97	2.93	2.90	2.86	2.83	2.81
17	3.07	3.00	2.96	2.92	2.87	2.83	2.80	2.76	2.73	2.71
18	2.98	2.92	2.87	2.84	2.78	2.75	2.71	2.68	2.64	2.62
19	2.91	2.84	2.80	2.76	2.71	2.67	2.64	2.60	2.57	2.55
20	2.84	2.78	2.73	2.69	2.64	2.61	2.57	2.54	2.50	2.48
21	2.79	2.72	2.67	2.64	2.58	2.55	2.51	2.48	2.44	2.42
22	2.73	2.67	2.62	2.58	2.53	2.50	2.46	2.42	2.38	2.36
23	2.69	2.62	2.57	2.54	2.48	2.45	2.41	2.37	2.34	2.32
24	2.64	2.58	2.53	2.49	2.44	2.40	2.37	2.33	2.29	2.27
25	2.60	2.54	2.49	2.45	2.40	2.36	2.33	2.29	2.25	2.23
26	2.57	2.50	2.45	2.42	2.36	2.33	2.29	2.25	2.21	2.19
27	2.54	2.47	2.42	2.38	2.33	2.29	2.26	2.22	2.18	2.16
28	2.51	2.44	2.39	2.35	2.30	2.26	2.23	2.19	2.15	2.13
29	2.48	2.41	2.36	2.33	2.27	2.23	2.20	2.16	2.12	2.10
30	2.45	2.39	2.34	2.30	2.25	2.21	2.17	2.13	2.09	2.07
35	2.35	2.28	2.23	2.19	2.14	2.10	2.06	2.02	1.98	1.96
40	2.27	2.20	2.15	2.11	2.06	2.02	1.98	1.94	1.90	1.87
50	2.17	2.10	2.05	2.01	1.95	1.91	1.87	1.82	1.78	1.76
60	2.10	2.03	1.98	1.94	1.88	1.84	1.79	1.75	1.70	1.68
70	2.05	1.98	1.93	1.89	1.83	1.78	1.74	1.70	1.65	1.62
80	2.01	1.94	1.89	1.85	1.79	1.75	1.70	1.65	1.61	1.58
90	1.99	1.92	1.86	1.82	1.76	1.72	1.67	1.62	1.57	1.55
100	1.97	1.89	1.84	1.80	1.74	1.69	1.65	1.60	1.55	1.52
120	1.93	1.86	1.81	1.76	1.70	1.66	1.61	1.56	1.51	1.48
150	1.90	1.83	1.77	1.73	1.66	1.62	1.57	1.52	1.46	1.43
200	1.87	1.79	1.74	1.69	1.63	1.58	1.53	1.48	1.42	1.39
250	1.85	1.77	1.72	1.67	1.61	1.56	1.51	1.46	1.40	1.36
300	1.84	1.76	1.70	1.66	1.59	1.55	1.50	1.44	1.38	1.35
400	1.82	1.75	1.69	1.64	1.58	1.53	1.48	1.42	1.36	1.32
500	1.81	1.74	1.68	1.63	1.57	1.52	1.47	1.41	1.34	1.31
600	1.80	1.73	1.67	1.63	1.56	1.51	1.46	1.40	1.34	1.30
750	1.80	1.72	1.66	1.62	1.55	1.50	1.45	1.39	1.33	1.29
1000	1.79	1.72	1.66	1.61	1.54	1.50	1.44	1.38	1.32	1.28

Critical Values for the Tukey Q Test

d.f. = $N - K$ (ANOVA Error or Within d.f.) for ANOVA: Single Factor

d.f. = $N - R * C$ (ANOVA Within d.f.) for ANOVA: Two-Factor With Replication

d.f. = $(R - 1) * (C - 1)$ (ANOVA Error d.f.) for ANOVA: Two-Factor Without Replication

Number of Groups (Treatments) = K

Error df	Number of Groups (Treatments)								
	2	3	4	5	6	7	8	9	10
1	17.97	26.98	32.82	37.08	40.41	43.12	45.40	47.36	49.07
2	6.08	8.33	9.80	10.88	11.74	12.44	13.03	13.54	13.99
3	4.50	5.91	6.82	7.50	8.04	8.48	8.85	9.18	9.46
4	3.93	5.04	5.76	6.29	6.71	7.05	7.35	7.60	7.83
5	3.64	4.60	5.22	5.67	6.03	6.33	6.58	6.80	6.99
6	3.46	4.34	4.90	5.30	5.63	5.90	6.12	6.32	6.49
7	3.34	4.16	4.68	5.06	5.36	5.61	5.82	6.00	6.16
8	3.26	4.04	4.53	4.89	5.17	5.40	5.60	5.77	5.92
9	3.20	3.95	4.41	4.76	5.02	5.24	5.43	5.59	5.74
10	3.15	3.88	4.33	4.65	4.91	5.12	5.30	5.46	5.60
11	3.11	3.82	4.26	4.57	4.82	5.03	5.20	5.35	5.49
12	3.08	3.77	4.20	4.51	4.75	4.95	5.12	5.27	5.39
13	3.06	3.73	4.15	4.45	4.69	4.88	5.05	5.19	5.32
14	3.03	3.70	4.11	4.41	4.64	4.83	4.99	5.13	5.25
15	3.01	3.67	4.08	4.37	4.59	4.78	4.94	5.08	5.20
16	3.00	3.65	4.05	4.33	4.56	4.74	4.90	5.03	5.15
17	2.98	3.63	4.02	4.30	4.52	4.70	4.86	4.99	5.11
18	2.97	3.61	4.00	4.28	4.49	4.67	4.82	4.96	5.07
19	2.96	3.59	3.98	4.25	4.47	4.65	4.79	4.92	5.04
20	2.95	3.58	3.96	4.23	4.45	4.62	4.77	4.90	5.01
24	2.92	3.53	3.90	4.17	4.37	4.54	4.68	4.81	4.92
30	2.89	3.49	3.85	4.10	4.30	4.46	4.60	4.72	4.82
40	2.86	3.44	3.79	4.04	4.23	4.39	4.52	4.63	4.73
60	2.83	3.40	3.74	3.98	4.16	4.31	4.44	4.55	4.65
120	2.80	3.36	3.68	3.92	4.10	4.24	4.36	4.47	4.56
∞	2.77	3.31	3.63	3.86	4.03	4.17	4.29	4.39	4.47

From Table A.7 in *Introductory Biological Statistics* by Hampton and Havel, second edition, Waveland Press, Inc., 2006, page 162.

Chi-square Distribution Table

d.f.	.995	.99	.975	.95	.9	.1	.05	.025	.01
1	0.00	0.00	0.00	0.00	0.02	2.71	3.84	5.02	6.63
2	0.01	0.02	0.05	0.10	0.21	4.61	5.99	7.38	9.21
3	0.07	0.11	0.22	0.35	0.58	6.25	7.81	9.35	11.34
4	0.21	0.30	0.48	0.71	1.06	7.78	9.49	11.14	13.28
5	0.41	0.55	0.83	1.15	1.61	9.24	11.07	12.83	15.09
6	0.68	0.87	1.24	1.64	2.20	10.64	12.59	14.45	16.81
7	0.99	1.24	1.69	2.17	2.83	12.02	14.07	16.01	18.48
8	1.34	1.65	2.18	2.73	3.49	13.36	15.51	17.53	20.09
9	1.73	2.09	2.70	3.33	4.17	14.68	16.92	19.02	21.67
10	2.16	2.56	3.25	3.94	4.87	15.99	18.31	20.48	23.21
11	2.60	3.05	3.82	4.57	5.58	17.28	19.68	21.92	24.72
12	3.07	3.57	4.40	5.23	6.30	18.55	21.03	23.34	26.22
13	3.57	4.11	5.01	5.89	7.04	19.81	22.36	24.74	27.69
14	4.07	4.66	5.63	6.57	7.79	21.06	23.68	26.12	29.14
15	4.60	5.23	6.26	7.26	8.55	22.31	25.00	27.49	30.58
16	5.14	5.81	6.91	7.96	9.31	23.54	26.30	28.85	32.00
17	5.70	6.41	7.56	8.67	10.09	24.77	27.59	30.19	33.41
18	6.26	7.01	8.23	9.39	10.86	25.99	28.87	31.53	34.81
19	6.84	7.63	8.91	10.12	11.65	27.20	30.14	32.85	36.19
20	7.43	8.26	9.59	10.85	12.44	28.41	31.41	34.17	37.57
22	8.64	9.54	10.98	12.34	14.04	30.81	33.92	36.78	40.29
24	9.89	10.86	12.40	13.85	15.66	33.20	36.42	39.36	42.98
26	11.16	12.20	13.84	15.38	17.29	35.56	38.89	41.92	45.64
28	12.46	13.56	15.31	16.93	18.94	37.92	41.34	44.46	48.28
30	13.79	14.95	16.79	18.49	20.60	40.26	43.77	46.98	50.89
32	15.13	16.36	18.29	20.07	22.27	42.58	46.19	49.48	53.49
34	16.50	17.79	19.81	21.66	23.95	44.90	48.60	51.97	56.06
38	19.29	20.69	22.88	24.88	27.34	49.51	53.38	56.90	61.16
42	22.14	23.65	26.00	28.14	30.77	54.09	58.12	61.78	66.21
46	25.04	26.66	29.16	31.44	34.22	58.64	62.83	66.62	71.20
50	27.99	29.71	32.36	34.76	37.69	63.17	67.50	71.42	76.15
55	31.73	33.57	36.40	38.96	42.06	68.80	73.31	77.38	82.29
60	35.53	37.48	40.48	43.19	46.46	74.40	79.08	83.30	88.38
65	39.38	41.44	44.60	47.45	50.88	79.97	84.82	89.18	94.42
70	43.28	45.44	48.76	51.74	55.33	85.53	90.53	95.02	100.43
75	47.21	49.48	52.94	56.05	59.79	91.06	96.22	100.84	106.39
80	51.17	53.54	57.15	60.39	64.28	96.58	101.88	106.63	112.33
85	55.17	57.63	61.39	64.75	68.78	102.08	107.52	112.39	118.24
90	59.20	61.75	65.65	69.13	73.29	107.57	113.15	118.14	124.12
95	63.25	65.90	69.92	73.52	77.82	113.04	118.75	123.86	129.97
100	67.33	70.06	74.22	77.93	82.36	118.50	124.34	129.56	135.81

Table of Critical Values for Pearson's r

<i>df</i>	Level of Significance for a One-Tailed Test					
	.10	.05	.025	.01	.005	.0005
	Level of Significance for a Two-Tailed Test					
	.20	.10	.05	.02	.01	.001
1	0.951	0.988	0.997	0.9995	0.9999	0.99999
2	0.800	0.900	0.950	0.980	0.990	0.999
3	0.687	0.805	0.878	0.934	0.959	0.991
4	0.608	0.729	0.811	0.882	0.917	0.974
5	0.551	0.669	0.755	0.833	0.875	0.951
6	0.507	0.621	0.707	0.789	0.834	0.925
7	0.472	0.582	0.666	0.750	0.798	0.898
8	0.443	0.549	0.632	0.715	0.765	0.872
9	0.419	0.521	0.602	0.685	0.735	0.847
10	0.398	0.497	0.576	0.658	0.708	0.823
11	0.380	0.476	0.553	0.634	0.684	0.801
12	0.365	0.457	0.532	0.612	0.661	0.780
13	0.351	0.441	0.514	0.592	0.641	0.760
14	0.338	0.426	0.497	0.574	0.623	0.742
15	0.327	0.412	0.482	0.558	0.606	0.725
16	0.317	0.400	0.468	0.542	0.590	0.708
17	0.308	0.389	0.456	0.529	0.575	0.693
18	0.299	0.378	0.444	0.515	0.561	0.679
19	0.291	0.369	0.433	0.503	0.549	0.665
20	0.284	0.360	0.423	0.492	0.537	0.652
21	0.277	0.352	0.413	0.482	0.526	0.640
22	0.271	0.344	0.404	0.472	0.515	0.629
23	0.265	0.337	0.396	0.462	0.505	0.618
24	0.260	0.330	0.388	0.453	0.496	0.607
25	0.255	0.323	0.381	0.445	0.487	0.597
26	0.250	0.317	0.374	0.437	0.479	0.588
27	0.245	0.311	0.367	0.430	0.471	0.579
28	0.241	0.306	0.361	0.423	0.463	0.570
29	0.237	0.301	0.355	0.416	0.456	0.562
30	0.233	0.296	0.349	0.409	0.449	0.554
40	0.202	0.257	0.304	0.358	0.393	0.490
60	0.165	0.211	0.250	0.295	0.325	0.408
120	0.117	0.150	0.178	0.210	0.232	0.294
∞	0.057	0.073	0.087	0.103	0.114	0.146

Adapted from Appendix 2 (Critical Values of t) using the square root of $[t^2/(t^2 + df)]$

Note: Critical values for Infinite df actually calculated for $df= 500$.

**Critical Values of the Mann-Whitney U
(Two-Tailed Testing)**

n ₂	α	n ₁																	
		3	4	5	6	7	8	9	10	11	12	13	14	15	16	17	18	19	20
3	.05	--	0	0	1	1	2	2	3	3	4	4	5	5	6	6	7	7	8
	.01	--	0	0	0	0	0	0	0	0	1	1	1	2	2	2	2	3	3
4	.05	--	0	1	2	3	4	4	5	6	7	8	9	10	11	11	12	13	14
	.01	--	--	0	0	0	1	1	2	2	3	3	4	5	5	6	6	7	8
5	.05	0	1	2	3	5	6	7	8	9	11	12	13	14	15	17	18	19	20
	.01	--	--	0	1	1	2	3	4	5	6	7	7	8	9	10	11	12	13
6	.05	1	2	3	5	6	8	10	11	13	14	16	17	19	21	22	24	25	27
	.01	--	0	1	2	3	4	5	6	7	9	10	11	12	13	15	16	17	18
7	.05	1	3	5	6	8	10	12	14	16	18	20	22	24	26	28	30	32	34
	.01	--	0	1	3	4	6	7	9	10	12	13	15	16	18	19	21	22	24
8	.05	2	4	6	8	10	13	15	17	19	22	24	26	29	31	34	36	38	41
	.01	--	1	2	4	6	7	9	11	13	15	17	18	20	22	24	26	28	30
9	.05	2	4	7	10	12	15	17	20	23	26	28	31	34	37	39	42	45	48
	.01	0	1	3	5	7	9	11	13	16	18	20	22	24	27	29	31	33	36
10	.05	3	5	8	11	14	17	20	23	26	29	33	36	39	42	45	48	52	55
	.01	0	2	4	6	9	11	13	16	18	21	24	26	29	31	34	37	39	42
11	.05	3	6	9	13	16	19	23	26	30	33	37	40	44	47	51	55	58	62
	.01	0	2	5	7	10	13	16	18	21	24	27	30	33	36	39	42	45	48
12	.05	4	7	11	14	18	22	26	29	33	37	41	45	49	53	57	61	65	69
	.01	1	3	6	9	12	15	18	21	24	27	31	34	37	41	44	47	51	54
13	.05	4	8	12	16	20	24	28	33	37	41	45	50	54	59	63	67	72	76
	.01	1	3	7	10	13	17	20	24	27	31	34	38	42	45	49	53	56	60
14	.05	5	9	13	17	22	26	31	36	40	45	50	55	59	64	67	74	78	83
	.01	1	4	7	11	15	18	22	26	30	34	38	42	46	50	54	58	63	67
15	.05	5	10	14	19	24	29	34	39	44	49	54	59	64	70	75	80	85	90
	.01	2	5	8	12	16	20	24	29	33	37	42	46	51	55	60	64	69	73
16	.05	6	11	15	21	26	31	37	42	47	53	59	64	70	75	81	86	92	98
	.01	2	5	9	13	18	22	27	31	36	41	45	50	55	60	65	70	74	79
17	.05	6	11	17	22	28	34	39	45	51	57	63	67	75	81	87	93	99	105
	.01	2	6	10	15	19	24	29	34	39	44	49	54	60	65	70	75	81	86
18	.05	7	12	18	24	30	36	42	48	55	61	67	74	80	86	93	99	106	112
	.01	2	6	11	16	21	26	31	37	42	47	53	58	64	70	75	81	87	92
19	.05	7	13	19	25	32	38	45	52	58	65	72	78	85	92	99	106	113	119
	.01	3	7	12	17	22	28	33	39	45	51	56	63	69	74	81	87	93	99
20	.05	8	14	20	27	34	41	48	55	62	69	76	83	90	98	105	112	119	127
	.01	3	8	13	18	24	30	36	42	48	54	60	67	73	79	86	92	99	105

**Critical Values of the Mann-Whitney U
(One-Tailed Testing)**

n ₂	α	n ₁																	
		3	4	5	6	7	8	9	10	11	12	13	14	15	16	17	18	19	20
3	.05	0	0	1	2	2	3	4	4	5	5	6	7	7	8	9	9	10	11
	.01	--	0	0	0	0	0	1	1	1	2	2	3	3	4	4	4	5	5
4	.05	0	1	2	3	4	5	6	7	8	9	10	11	12	14	15	16	17	18
	.01	--	--	0	1	1	2	3	3	4	5	5	6	7	7	8	9	9	10
5	.05	1	2	4	5	6	8	9	11	12	13	15	16	18	19	20	22	23	25
	.01	--	0	1	2	3	4	5	6	7	8	9	10	11	12	13	14	15	16
6	.05	2	3	5	7	8	10	12	14	16	17	19	21	23	25	26	28	30	32
	.01	--	1	2	3	4	6	7	8	9	11	12	13	15	16	18	19	20	22
7	.05	2	4	6	8	11	13	15	17	19	21	24	26	28	30	33	35	37	39
	.01	0	1	3	4	6	7	9	11	12	14	16	17	19	21	23	24	26	28
8	.05	3	5	8	10	13	15	18	20	23	26	28	31	33	36	39	41	44	47
	.01	0	2	4	6	7	9	11	13	15	17	20	22	24	26	28	30	32	34
9	.05	4	6	9	12	15	18	21	24	27	30	33	36	39	42	45	48	51	54
	.01	1	3	5	7	9	11	14	16	18	21	23	26	28	31	33	36	38	40
10	.05	4	7	11	14	17	20	24	27	31	34	37	41	44	48	51	55	58	62
	.01	1	3	6	8	11	13	16	19	22	24	27	30	33	36	38	41	44	47
11	.05	5	8	12	16	19	23	27	31	34	38	42	46	50	54	57	61	65	69
	.01	1	4	7	9	12	15	18	22	25	28	31	34	37	41	44	47	50	53
12	.05	5	9	13	17	21	26	30	34	38	42	47	51	55	60	64	68	72	77
	.01	2	5	8	11	14	17	21	24	28	31	35	38	42	46	49	53	56	60
13	.05	6	10	15	19	24	28	33	37	42	47	51	56	61	65	70	75	80	84
	.01	2	5	9	12	16	20	23	27	31	35	39	43	47	51	55	59	63	67
14	.05	7	11	16	21	26	31	36	41	46	51	56	61	66	71	77	82	87	92
	.01	2	6	10	13	17	22	26	30	34	38	43	47	51	56	60	65	69	73
15	.05	7	12	18	23	28	33	39	44	50	55	61	66	72	77	83	88	94	100
	.01	3	7	11	15	19	24	28	33	37	42	47	51	56	61	66	70	75	80
16	.05	8	14	19	25	30	36	42	48	54	60	65	71	77	83	89	95	101	107
	.01	3	7	12	16	21	26	31	36	41	46	51	56	61	66	71	76	82	87
17	.05	9	15	20	26	33	39	45	51	57	64	70	77	83	89	96	102	109	115
	.01	4	8	13	18	23	28	33	38	44	49	55	60	66	71	77	82	88	93
18	.05	9	16	22	28	35	41	48	55	61	68	75	82	88	95	102	109	116	123
	.01	4	9	14	19	24	30	36	41	47	53	59	65	70	76	82	88	94	100
19	.05	10	17	23	30	37	44	51	58	65	72	80	87	94	101	109	116	123	130
	.01	4	9	15	20	26	32	38	44	50	56	63	69	75	82	88	94	101	107
20	.05	11	18	25	32	39	47	54	62	69	77	84	92	100	107	115	123	130	138
	.01	5	10	16	22	28	34	40	47	53	60	67	73	80	87	93	100	107	114